

## Optiline

Cutting line visualization software for band saw



### Customer benefits

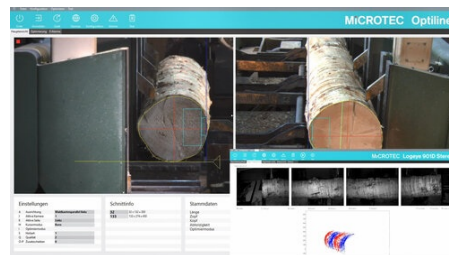
- ✓ Digital cutting pattern visualization on the real log image
- ✓ Enables cutting pattern monitoring and manual cutting pattern modification
- ✓ Allows a correct rotation and alignment of logs while controlling saws and clamping blocks machinery



Optiline virtually projects the optimized cutting pattern onto live video images of the head and tail end of logs. The operator can monitor and manually modify the cutting solution if necessary. In pair with Maxicut, Optiline controls saws and clamping blocks. Optiline performs best in combination with Logeye stereo, but also with CT Log and the rest of the Logeye family.

## Touch panel for solution monitoring

Optiline is an automatic system that offers the possibility for the operator to interact with any cutting solution on the carriage. The perfect synergy between machine and human is finally true.



Application

✓ Cutting optimization

Option

✓ Maxicut

✓ Defect detection on log faces

## World leading wood scanning solutions



Microtec - Company  
Via Julius-Durst Straße 98  
39042 Bressanone / Brixen  
Italy

T +39 0472 273 611

[info@microtec.eu](mailto:info@microtec.eu)

<https://microtec.eu>