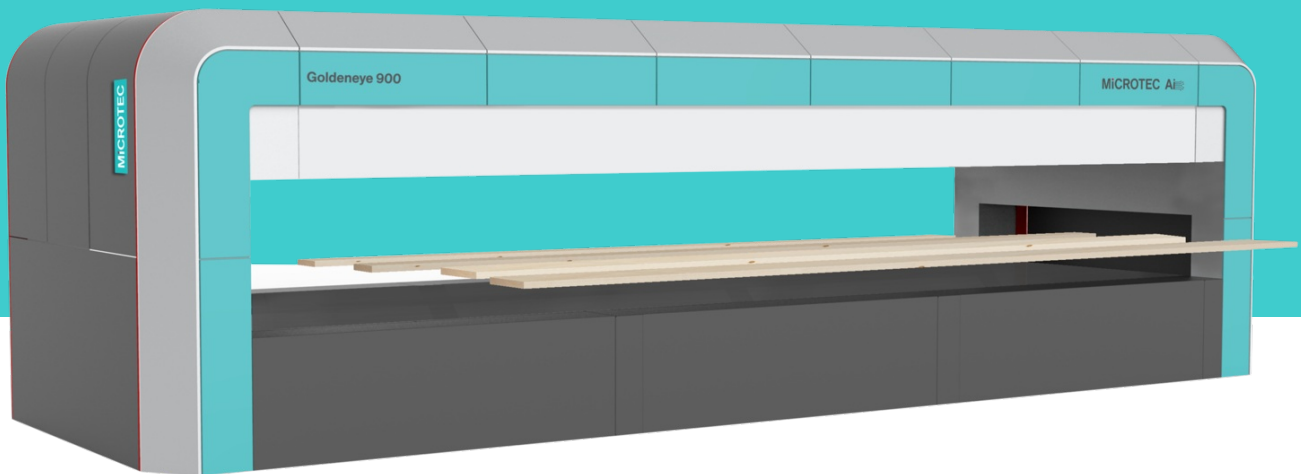


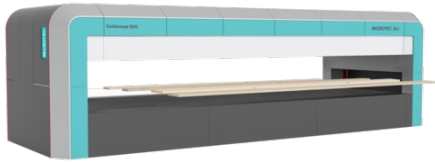
Goldeneye Transverse

High precision multi-sensor transverse quality scanner



Customer benefits

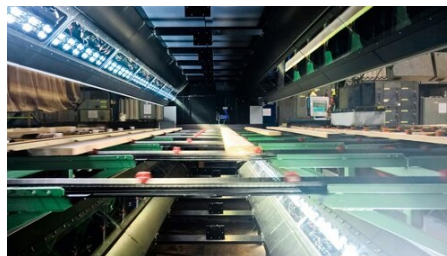
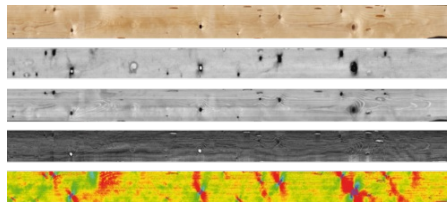
- ✓ Unparalleled lumber grading precision & value yield improvement powered by MiCROTEC Ai
- ✓ Highest scanning speed for increased volume capacity
- ✓ Perfect 4-sided detection for high demand sorting & grading
- ✓ Modular design and hardware configuration
- ✓ Grading monitoring & improvement (QC Assist)



The Goldeneye 900 scanner reliably and precisely determines the overall quality of green, dry, or planed lumber from all four sides. The seamless integration of color and laser imaging into one multi-sensor system ensures a fast and straightforward installation and increases your production in a single pass. Its smart design guarantees the most accurate color recognition on all four sides independently from the cross-section of the board.

Pure Precision

The Goldeneye multi-sensor quality scanner accurately recognizes wood defects, grades and classifies lumber with the highest precision. The scanner features scattering laser, 3D laser, and color imaging.

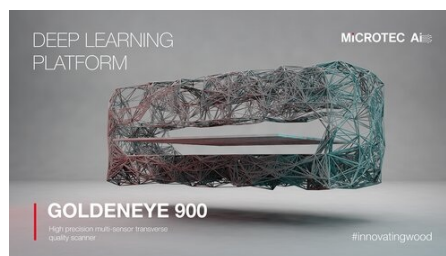


Powered by MiCROTEC Ai

Artificial Intelligence (Deep Learning AI) is integrated into all quality scanners from log to finished board. The AI knowledge of all MiCROTEC companies is merged into the MiCROTEC Ai platform, raising the possibilities of Deep Learning AI in the wood industry to a completely new level.

Pure Quality

The Goldeneye multi-sensor quality scanner determines the overall quality of green, dry, and planed lumber on all four sides and provides best-in-class optimization. One optimizer allows you to grade your lumber at all different stages of your production.



Species

✓ Softwood

Feeding

✓ Transverse

Purpose of scanning

✓ Dimensional

✓ Quality

✓ Strength grading

Technology

✓ 3D Laser

✓ Scattering Laser

✓ Color

✓ MiCROTEC Ai

Technical Data

✓ Speed up to 240 lugs/min

✓ Thickness up to 130 mm/5.12"

✓ Width up to 600 mm/23.6"

Application

✓ Sorting

✓ Trimming

✓ Edging

✓ Ripping

✓ Grading

✓ Cross-cutting

Feature

✓ Cut-in-2

✓ Warp profile

✓ Slope of grain

✓ NGR optimization

✓ Finger joint optimization (CLT-GLT)

✓ MiCROTEC Connect

Option

✓ Simulation Suite

✓ Synchronization Suite

✓ Moisture profile

✓ Pith Position

✓ Annual ring orientation

Goldeneye Models

<div>Goldeneye 900</div> <div><div>✓ Laser</div><div>✓ Color</div><div>✓ No occlusions (top-top or top-bottom gapless)</div><div>✗ Density</div><div>✗ MOE</div><div>✓ Certified for Strength Grading</div></div>	<div>Goldeneye 901</div> <div><div>✓ Laser</div><div>✓ Color</div><div>✓ No occlusions (top-top or top-bottom gapless)</div><div>✗ Density</div><div>✗ MOE</div><div>✓ Certified for Strength Grading</div></div>	<div>Goldeneye 902</div> <div><div>✓ Laser</div><div>✓ Color</div><div>✓ No occlusions (top-top or top-bottom gapless)</div><div>✓ Density (Combination with Denscan)</div><div>✗ MOE</div><div>✓ Certified for Strength Grading</div></div>	<div>Goldeneye 906</div> <div><div>✓ Laser</div><div>✓ Color</div><div>✓ No occlusions (top-top or top-bottom gapless)</div><div>✓ Density (Combination with Denscan)</div><div>✓ MOE (Combination with Viscan)</div><div>✓ Certified for Strength Grading</div></div>
---	---	--	--

MiCROTEC

World leading wood scanning solutions



MiCROTEC
155 SW Madison Ave.
97333 Corvallis, OR
United States

T 541-753-5111
sales@microtec.us
<https://microtec.us>